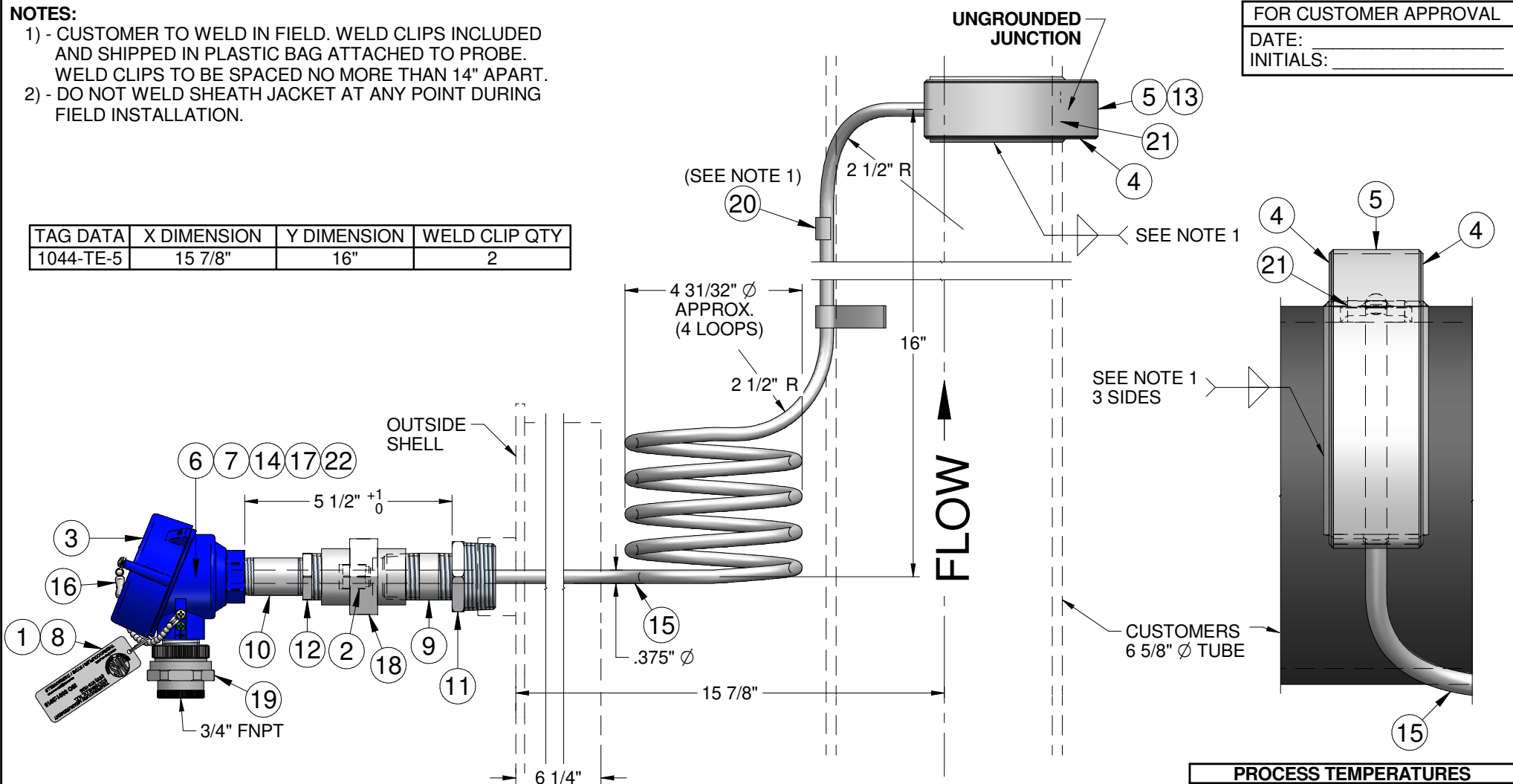


# NOTES:

- 1) - CUSTOMER TO WELD IN FIELD. WELD CLIPS INCLUDED AND SHIPPED IN PLASTIC BAG ATTACHED TO PROBE. WELD CLIPS TO BE SPACED NO MORE THAN 14" APART.
- 2) - DO NOT WELD SHEATH JACKET AT ANY POINT DURING FIELD INSTALLATION.

TAG DATA	X DIMENSION	Y DIMENSION	WELD CLIP QTY
1044-TE-5	15 7/8"	16"	2



FOR CUSTOMER APPROVAL  
DATE: \_\_\_\_\_  
INITIALS: \_\_\_\_\_

**PROCESS TEMPERATURES**  
MAX TEMP @ TIP: 2100° F  
MAX TEMP @ HEAD: AMBIENT

#	DESCRIPTION
1	CIRCLE COTTER, ZINC PLATED CS
2	COMPRESSION FITTING, .375"Ø, 1" NPT, WELD-IN STYLE, 316SS WITH 316SS FERRULE
3	HEAD, COATED ALUMINUM, SCREW COVER, 3/4"X3/4" FNPT, IP66, NEMA 4X, FM/CSA/ATEX/IECEx EXP CERT
4	HEAT SHIELD-SIDE, 310 SS
5	HEAT SHIELD-TOP, 310 SS
6	HEAT SHRINK, GLUE FILLED, BLACK PVC
7	JMS POTTING COMPOUND #1
8	JMS TAG, SS
9	NIPPLE, 1" SCH 40 PIPE, 316SS
10	NIPPLE, 3/4" SCH 40 PIPE, GALVANIZED
11	REDUCING BUSHING, 1 1/2" NPT X 1" NPT, 316SS
12	REDUCING BUSHING, 1" NPT X 3/4" FNPT, GALVANIZED
13	REFRACTORY INSULATION, LOOSE
14	SCREW, M4 X 0.7, 14MM LONG, WITH CAPTIVE WASHER, PLATED CARBON STEEL
15	SHEATH, TYPE K, .375" Ø, SINGLE, I600
16	SPLICING LINK
17	TERMINAL BLOCK, CERAMIC, 2 BRASS TERMINALS
18	UNION, 1" NPT, 150#, GALVANIZED
19	UNION, EX-PROOF, 3/4" FNPT X 3/4" MNPT, ALUMINUM, CLASS I, DIV. 1, 2, GROUPS A,B,C,D, UL/CSA
20	WELD CLIP, SINGLE 2" LONG TAB, 310SS
21	WELD PAD, 1" X 1" X 1/8" THICK, I600
22	WIRE, TYPE K, 20 AWG SOLID, TEFLON

JMS SOUTHEAST INCORPORATED CERTIFIES THIS DRAWING IS IN ACCORDANCE WITH JMS SOUTHEAST INCORPORATED ENGINEERING SPECIFICATIONS AND ACCURATELY REPRESENTS THE EQUIPMENT FURNISHED. THIS DRAWING IS THE SOLE PROPERTY OF JMS SE, AND MUST BE RETURNED UPON DEMAND IT MAY NOT BE REPRODUCED NOR THE INFORMATION CONTAINED THEREIN USED WITHOUT THE WRITTEN PERMISSION OF JMS SOUTHEAST INCORPORATED

Company Name: \_\_\_\_\_ Customers Process Type: **RADIANT**

Reference Data: QT#: Q232967 Drawing #: **26628** ERF #: 8812  
Rev 00 pg 1 of 2

Approvals	Initials	Date
Drafting		
Engineering		
Second		

**JMS SOUTHEAST, INC.**  
Temperature Measurement  
105 Temperature Lane  
Statesville, North Carolina 28677  
Phone: (704) 873-1835  
Fax: (704) 878-6166  
www.jms-se.com  
Email: sensors@jms-se.com

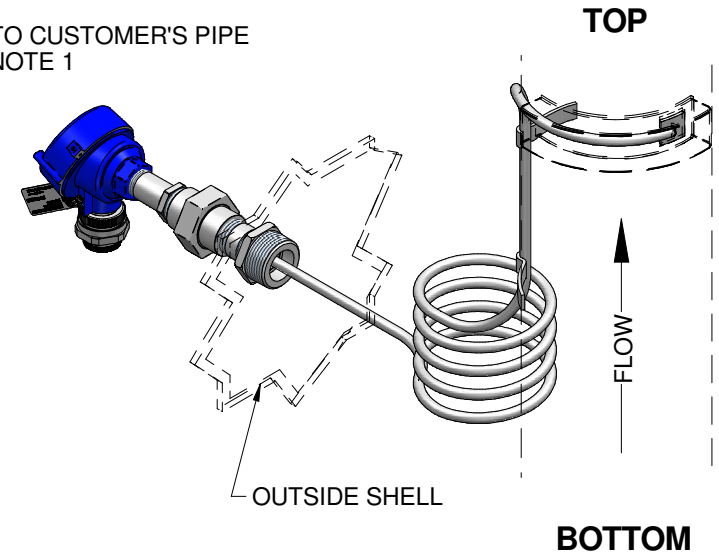
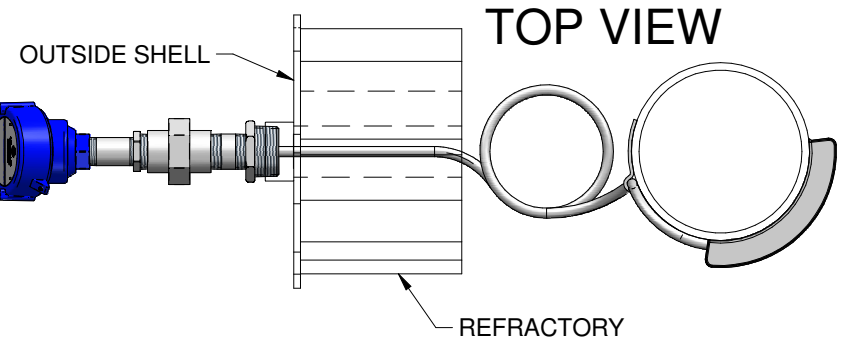
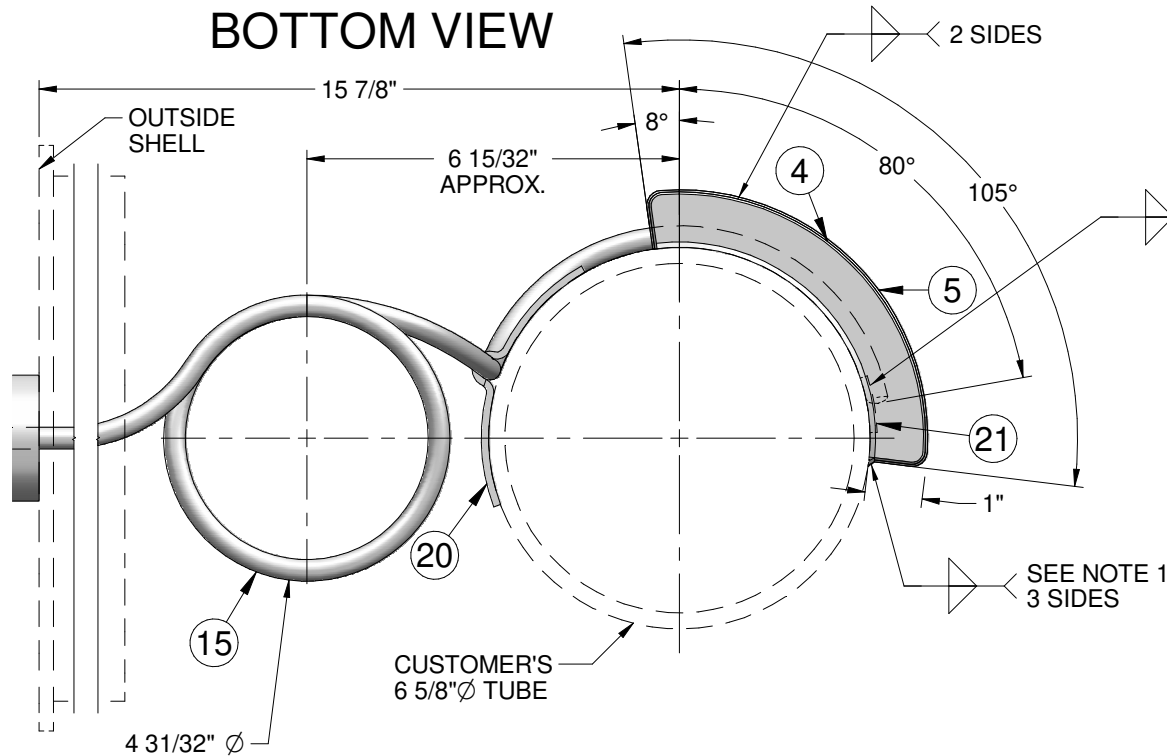
REV. 4-10-2009

FOR CUSTOMER APPROVAL

DATE: \_\_\_\_\_

INITIALS: \_\_\_\_\_

## BOTTOM VIEW



## PROCESS TEMPERATURES

MAX TEMP @ TIP: 2100° F  
MAX TEMP @ HEAD: AMBIENT

JMS SOUTHEAST INCORPORATED CERTIFIES THIS DRAWING IS IN ACCORDANCE WITH JMS SOUTHEAST INCORPORATED ENGINEERING SPECIFICATIONS AND ACCURATELY REPRESENTS THE EQUIPMENT FURNISHED. THIS DRAWING IS THE SOLE PROPERTY OF JMS SE, AND MUST BE RETURNED UPON DEMAND IT MAY NOT BE REPRODUCED NOR THE INFORMATION CONTAINED THEREIN USED WITHOUT THE WRITTEN PERMISSION OF JMS SOUTHEAST INCORPORATED

Company Name:

Customers Process Type:

RADIANT

Reference Data:  
QT#: Q232967

Drawing #:  
**26628**

ERF #: 8812

Rev 00 pg 2 of 2

TOLERANCE TABLE:  
PROBE (L): 0-48" ±1/8"  
48"-144" ±1/4"  
144"-144" ±1/4"  
WIRE (L): <24" -1/2" / +1"  
>24" -1/2" / +2"  
PROT. TUBE (P&U): ±1/4"  
FRACTIONAL DIM: ±1/8"  
DECIMAL DIM: ±0.10"  
X.XX ±0.010"  
X.XXX ±0.005"  
UNLESS STATED OTHERWISE

Approvals  
Drafting  
Engineering  
Second

Initials  
Date

DATE



**JMS SOUTHEAST, INC.**  
Temperature Measurement  
105 Temperature Lane  
Statesville, North Carolina 28677  
Phone: (704) 873-1835  
Fax: (704) 878-6166  
www.jms-se.com  
Email: sensors@jms-se.com  
REV. 4-10-2009

#	DESCRIPTION
1	CIRCLE COTTER, ZINC PLATED CS
2	COMPRESSION FITTING, .375"Ø, 1" NPT, WELD-IN STYLE, 316SS WITH 316SS FERRULE
3	HEAD, COATED ALUMINUM, SCREW COVER, 3/4" X 3/4" FNPT, IP66, NEMA 4X, FM/CSA/ATEX/IECEx EXP CERT
4	HEAT SHIELD-SIDE, 310 SS
5	HEAT SHIELD-TOP, 310 SS
6	HEAT SHRINK, GLUE FILLED, BLACK PVC
7	JMS POTTING COMPOUND #1
8	JMS TAG, SS
9	NIPPLE, 1" SCH 40 PIPE, 316SS
10	NIPPLE, 3/4" SCH 40 PIPE, GALVANIZED
11	REDUCING BUSHING, 1 1/2" NPT X 1" NPT, 316SS
12	REDUCING BUSHING, 1" NPT X 3/4" FNPT, GALVANIZED
13	REFRACTORY INSULATION, LOOSE
14	SCREW, M4 X 0.7, 14MM LONG, WITH CAPTIVE WASHER, PLATED CARBON STEEL
15	SHEATH, TYPE K, .375" Ø, SINGLE, 1600
16	SPLICING LINK
17	TERMINAL BLOCK, CERAMIC, 2 BRASS TERMINALS
18	UNION, 1" NPT, 150#, GALVANIZED
19	UNION, EX-PROOF, 3/4" FNPT X 3/4" MNPT, ALUMINUM, CLASS I, DIV. 1, 2, GROUPS A,B,C,D, UL/CSA
20	WELD CLIP, SINGLE 2" LONG TAB, 310SS
21	WELD PAD, 1" X 1" X 1/8" THICK, I600
22	WIRE, TYPE K, 20 AWG SOLID, TEFLON